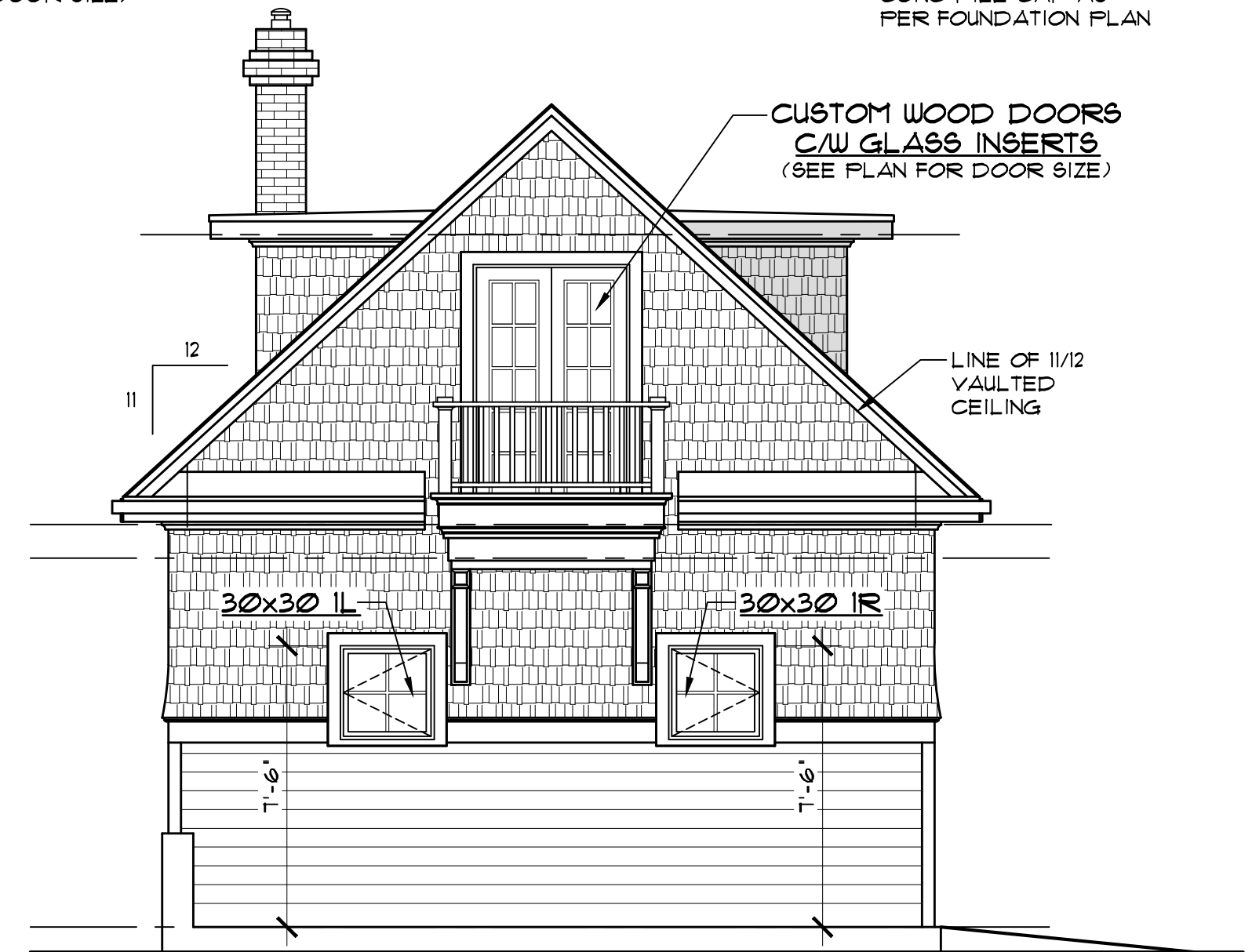


**SOUTH ELEVATION**  
SCALE: 1/4" = 1'-0"



**WEST ELEVATION**  
SCALE: 1/4" = 1'-0"

**ELEVATION NOTES:**

1. WINDOWS AND DOOR SIZES SHOWN DO NOT INCLUDE ROUGH OPENING DIMENSIONS. WINDOW SUPPLIER TO PROVIDE EXACT ROUGH OPENINGS PRIOR TO FRAMING.
2. WINDOWS AND DOORS TO ILLUSTRATE DIRECTION OF OPERATION, OBSCURE GLASS, ETC.
3. TYPICAL MOUNTING HEIGHTS DIMENSIONED. ADJUST MOUNTING HEIGHT TO MATCH R.O. OF AN ADJACENT DOOR WHEN THEY ARE WITHIN THE SAME ROOM
4. SEE FRONT ELEVATIONS FOR EXTERIOR FINISHES & DETAILS. ONLY UNIQUE FINISHES & DETAILS WILL BE NOTED ON REMAINING ELEVATIONS.

**GENERAL NOTES:**

1. BUILDER TO CONFORM TO NATIONAL BUILDING CODE OF CANADA (2010) PART 9.
2. DRAWINGS NOT TO BE SCALED.
3. BUILDER SHALL SATISFY HIMSELF THAT ALL DIMENSIONS, DATUMS, AND INFORMATION SHOWN ARE CORRECT. VERIFY ALL DIMENSIONS ON SITE. DIMENSIONS ARE TAKEN TO EXTERIOR FACE OF WALL SHEATHING AND CENTERLINE OF INT PARTITIONS UNLESS NOTED OTHERWISE.
4. NO MODIFICATIONS PERMITTED TO STRUCTURE WITHOUT WRITTEN APPROVAL OF BUILDER'S STRUCTURAL ENGINEER.
5. ALL BEAMS & HEADERS TO BE SIZED BY OTHERS TO SUIT STRUCTURAL LOADING.
6. IF THERE IS A DISCREPANCY BETWEEN THE DRAWINGS AND THE BUILDERS SPECS, THE SPECS SHALL OVERRULE THE DRAWINGS.

NOTE: BUILDER/CONTRACTOR TO CONFIRM ALL EXISTING DIMENSIONS, ROOF SLOPES, HEEL HEIGHTS, AND OVERHANGS ON SITE PRIOR TO CONSTRUCTION

ALL WINDOW SIZES ARE APPROXIMATE. EXACT ROUGH OPENING SIZES TO BE CONFIRMED ON SITE & CUSTOM WINDOWS BUILT TO SUIT EXISTING OPENINGS.

**ABBREVIATIONS:**

- UNO - UNLESS NOTED OTHERWISE
- TYP - TYPICAL
- U/S - UNDER SIDE
- C/W - COMPLETE WITH
- R.O. - ROUGH OPENING
- O.C. - ON CENTER
- LBW - LOAD BEARING WALL
- T/O - TOP OF
- SH - SHELF
- COL - COLUMN
- CJ - CONTROL JOINT
- WD - WOOD
- CONC - CONCRETE
- PREFIN - PREFINISHED
- FLR - FLOOR
- CLG - CEILING
- HT - HEIGHT

DISCLAIMER  
1. Copyright of these plans remains with Robinson Residential Design Inc. Duplication of these plans in whole or in part is strictly prohibited without prior written permission from Robinson Residential Design Inc.  
2. Drawings are not to be scaled.

3. All plans are drawn to suit the Canadian National Building Code (2010). Due to local building codes, zoning regulations and climatic conditions, plans must be reviewed by local building official prior to construction. All structural components indicated on these drawings must be reviewed and engineered by a licensed architect or engineer.

4. Robinson Residential Design Inc. assumes no liability or responsibility for any errors, omissions and any incidental indirect or consequential damages whatsoever arising from the use of these drawings or the information provided therein.  
5. Builder to conform to National Building Code of Canada (2010) Part 9.

**ROBINSON RESIDENTIAL**  
PERSONALIZING HOME DESIGN

2232 2ND AVENUE  
REGINA, SASKATCHEWAN  
CANADA S4R 1K3  
TEL: (306) 352-6617  
FAX: (306) 352-6619

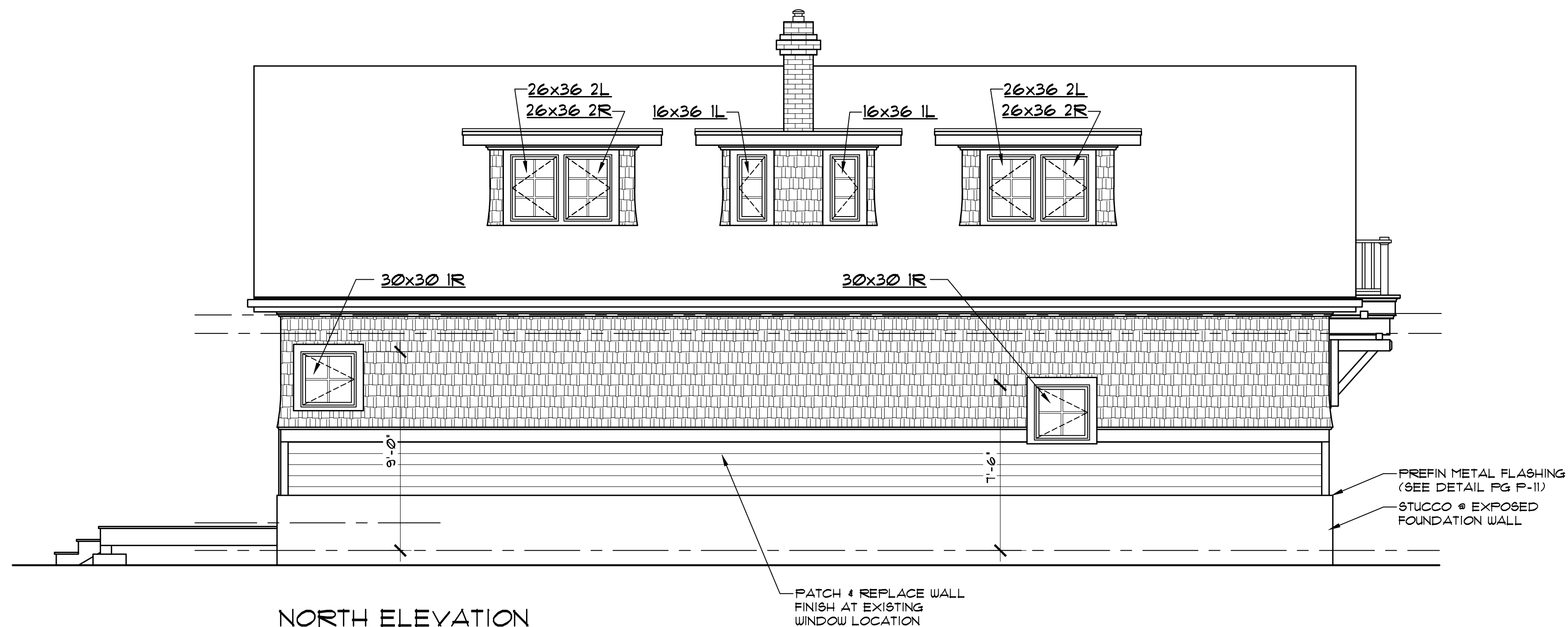
PROJECT  
**PROPOSED RESTORATION  
OF THE CARRIAGE HOUSE AT  
2990 ALBERT ST** REGINA, SASKATCHEWAN

SCALE  
1/4" = 1'-0"  
DATE  
MAR 28, 2016

DESIGNED BY  
J.R.  
DRAWN BY  
J.M.

DRAWING TITLE  
**EXTERIOR ELEVATIONS**

DRAWING NO.  
**A-1**



**NORTH ELEVATION**  
SCALE: 1/4" = 1'-0"

**NORTH ELEVATION GLAZED OPENING CALCS:**  
 LIMITING DISTANCE = 15m  
 MAX % OF GLAZED OPENINGS = 8% (NBC 9.10.15.4)  
 EXPOSED BUILDING FACE AREA = 611 SQ FT  
 AREA OF GLAZED OPENINGS (%) = 46 SQ FT (7.5%)



**EAST ELEVATION**  
SCALE: 1/4" = 1'-0"

NOTE: BUILDER/CONTRACTOR TO CONFIRM ALL EXISTING DIMENSIONS, ROOF SLOPES, HEEL HEIGHTS, AND OVERHANGS ON SITE PRIOR TO CONSTRUCTION

ALL WINDOW SIZES ARE APPROXIMATE. EXACT ROUGH OPENING SIZES TO BE CONFIRMED ON SITE & CUSTOM WINDOWS BUILT TO SUIT EXISTING OPENINGS.

**DISCLAIMER**  
 1. Copyright of these plans remains with Robinson Residential Design Inc. Duplication of these plans in whole or in part is strictly prohibited without prior written permission from Robinson Residential Design Inc.  
 2. Drawings are not to be scaled.  
 3. All plans are drawn to suit the Canadian National Building Code (2010). Due to local building codes, zoning regulations and climatic conditions, plans must be reviewed by local building official prior to construction. All structural components indicated on these drawings must be reviewed and engineered by a licensed architect or engineer.  
 4. Robinson Residential Design Inc. assumes no liability or responsibility for any errors, omissions and any incidental, indirect or consequential damages whatsoever arising from the use of these drawings or the information provided therein.  
 5. Builder to conform to National Building Code of Canada (2010) Part 9.

**ROBINSON RESIDENTIAL**  
PERSONALIZING HOME DESIGN

2232 2ND AVENUE  
REGINA, SASKATCHEWAN  
CANADA S4R 1K3  
TEL: (306) 352-6617  
FAX: (306) 352-6619

PROJECT  
**PROPOSED RESTORATION OF THE CARRIAGE HOUSE AT 2990 ALBERT ST** REGINA, SASKATCHEWAN

SCALE  
1/4" = 1'-0"  
DATE  
MAR 28, 2016

DESIGNED BY  
J.R.  
DRAWN BY  
J.M.

DRAWING TITLE  
**EXTERIOR ELEVATIONS**

DRAWING NO.  
**A-2**